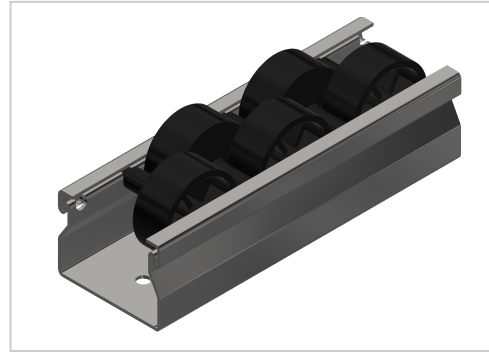


Roller Conveyor St D30, grey

Product number ZL-9021 SN4500

Weight 3.798kg

Length 4500mm



Product description

Delivery length 4500 mm

Perfect for your lean shelving: smooth-running roller conveyors with steel axles for an extra long service life.

Compatible with item 0.0.633.91

Product properties

Compatible with item , Bosch

Series i- LPS Lean Production, B- LPS Lean Production

Part type Roller tracks St

Colour black

Profile length 4500 mm

Delivery unit Rods

Material Galvanized steel

Lean system type D30 Aluminium i kit system

More images

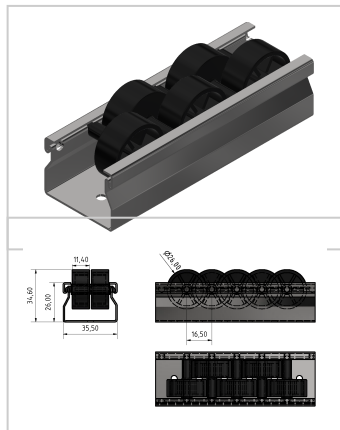


Image not found or type unknown

