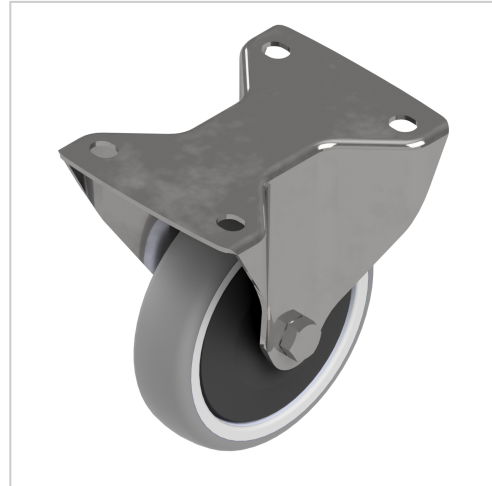


# Castor fixed D100, bright zinc-plated

**Product number** ZI-2193

**Weight** 1kg



## Product description

Swivel and fixed castors are used on assemblies and frames of all kinds. They have very good rolling characteristics and are highly resilient. The castors are resistant to many environmental influences. Especially for use in electrical production, many castors are also available in ESD versions. The ESD version has a discharge resistance of 110 Ohm.

## Product properties

<b>Roll type</b>	Fixed castor
<b>Mounting type</b>	Screw-on plate
<b>Compatible with</b>	item
<b>Part type</b>	Apparatus castors
<b>Roller diameter</b>	Ø 125 mm
<b>Load capacity</b>	250 kg
<b>Series</b>	Series 8
<b>ESD discharging</b>	Yes
<b>Material</b>	Galvanized steel

## More images

