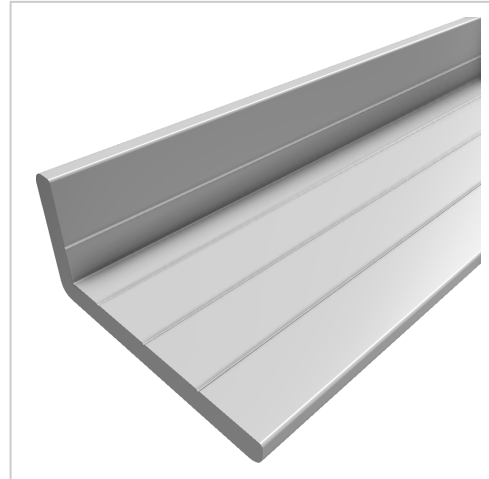


Profile M 40x40x4 E natural

Product number PI-1416 SN2000
Weight 0.76kg
Length 2000mm



Product description

Angle and flat profiles can be used in a variety of ways, e.g. for edging panel elements, as end or support strips, etc.

Delivery length 2000 mm

Compatible with item 7.0.002.7

Product properties

Compatible with item
Breite Profil 40 mm
Höhe Profil 20 mm
Size 40x20 mm
Contour Angle
Delivery unit Rods
Series Series 8
Profile length 2000 mm bar
Groove shape 4 sides closed
Colour natural
Execution economy

More images

