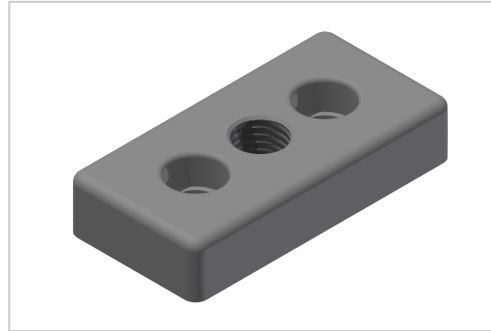


Base Plate 40x80 M16-8 | Alu natural

Product number ZI-1025-N



Product description

For attaching adjusting feet, rollers, ring screws, etc., to the front side of the profiles. The base plate can also be screwed to the groove side with groove stones.

Product properties

Compatible with	item
Part type	Base plates
Series	Series 8
Size	80x40 mm
Thread	M16

More images

