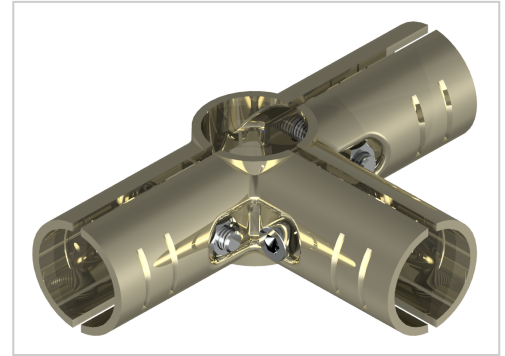


Basic connector set as corner form 3 | ESD

Product number GA-3S-NI

Weight 0.33kg



Product description

Clamp connector set made of steel for the assembly of stable pipe push-in clamp connections.

Product properties

Compatible with Beewatec
Series S- LPS Lean Production
Part type Connector
Lean system type D28 steel kit system
Connector type Basic connector

More images

