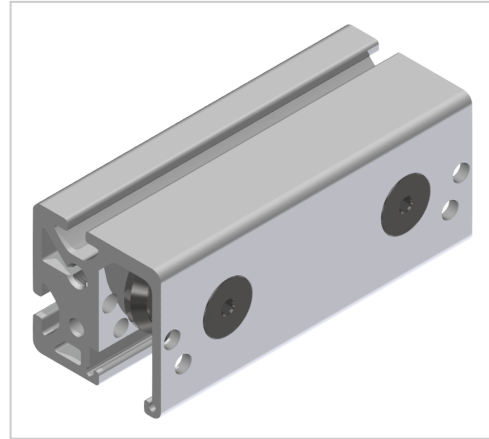


Double-Bearing Unit 8 D14 z

Product number ZI-1645

Weight 0.885kg



Product description

Linear slides are built with storage units. They are used in pairs, 1 each eccentric (this is set free of play) and opposite 1 centric. In order to minimize wear, a wiper lubrication system must be installed on every bearing unit.

Product properties

Compatible with item

Part type Roller guides

Series Series 8

Diameter mm Ø 14

More images

