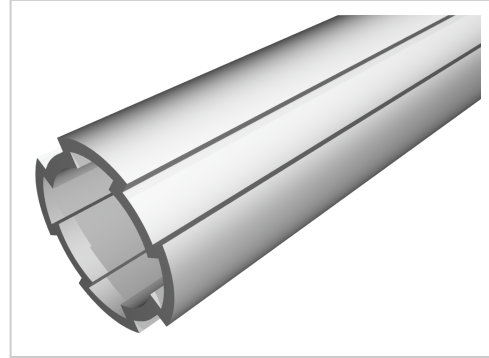


Profile Tube D 28, natural

Product number PL-1110 SN 6000
Weight 2.898kg
Length 6000mm



Product description

Round tube with clamping grooves made of aluminum

Product properties

Material Al Mg Si 0.5 F25, artificially aged
Anodised E6EV1 10-15 µm silver
Tolerances EN 12020-2
Compatible with Bosch
Series B- LPS Lean Production
Delivery unit Rods
Profile length 6000 mm bar
Colour silver similar to RAL 7035
Lean system type D28 Aluminium B kit system

More images

