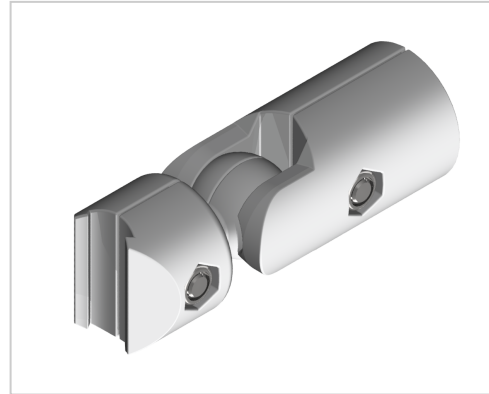


# Ball Connector Set D28

**Product number** ZL-1245

**Weight** 0.145kg



## Product description

For variable connection of two round tube profiles with outer diameter Ø 28 with anti-twist device

## Product properties

|                         |                            |
|-------------------------|----------------------------|
| <b>Compatible with</b>  | Bosch                      |
| <b>Series</b>           | B- LPS Lean Production     |
| <b>Connector type</b>   | D-28 Connector             |
| <b>Part type</b>        | Connector                  |
| <b>Material</b>         | GD-Al, natur               |
| <b>Lean system type</b> | D28 Aluminium B kit system |

## More images

