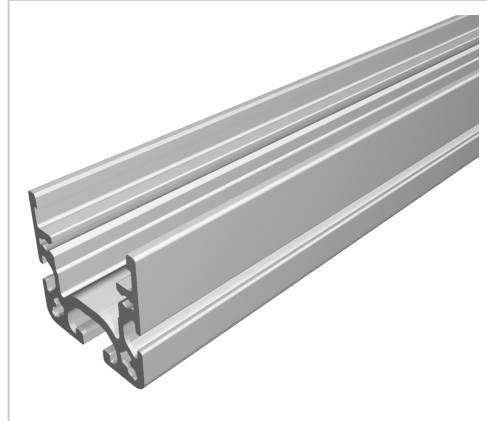


Castor Rail 40x40 I, natural

Product number PL-1090 SN6000

Length 6000mm



Product description

The roller track 40x40 D28 is our specialist for complex transport solutions.

The 40x40 roller track forms the basis.

It is equipped with roller, ball transfer roller, brush or glide inserts.

The various inserts can also be retrofitted as required by simply by simply snapping them into place

Product properties

Material Al Mg Si 0.5 F25, artificially aged

Anodised E6EV1 10-15 µm silver

Tolerances EN 12020-2

Compatible with item

Series i- LPS Lean Production

Part type Roller conveyor profile

Delivery unit Rods

Colour natural

Lean system type D30 Aluminium i kit system

More images

