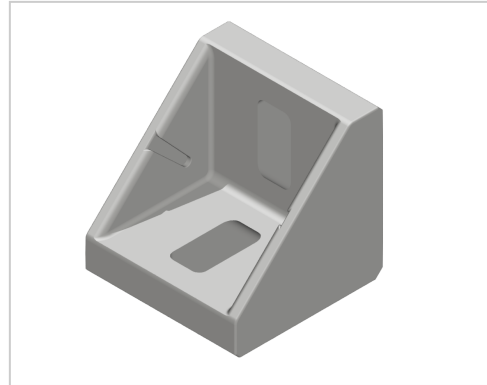


# Angle Bracket 45x45 - 10 | natural

**Product number** ZB-3098-N

**Weight** 0.052kg



## Product description

Angles are a force-fit and processing wireless connection. These are also used as additional reinforcement of connections and as a fastener for attachments. Integral safety devices for fixing the profile are available. These are removed if necessary.

## Product properties

<b>Profile processing</b>	without profile machining
<b>Compatible with</b>	Bosch
<b>Part type</b>	Bracket
<b>Series</b>	Series 45-10
<b>Angle bracket type</b>	Angle bracket AI
<b>Modular dimension</b>	Modular dimension 45
<b>Size</b>	45x45 mm

More images

