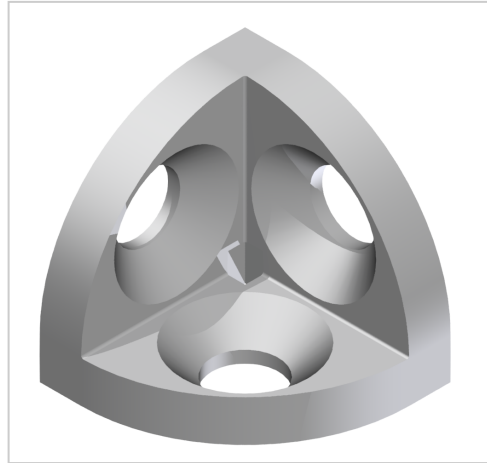


## 3-way Connection 45, natural-10

**Product number** VB-3320

**Weight** 0.132kg



### Product description

Connecting sets enable the construction of visually appealing 3D room corners with 3 profiles or a corner angle with 2 profiles. A thread must be drilled into the end face of the corner profiles.

### Product properties

<b>Compatible with</b>	Bosch
<b>Part type</b>	Connector
<b>Connector type</b>	Corner connectors
<b>Series</b>	Series 45-10
<b>Colour</b>	natural
<b>Modular dimension</b>	Modular dimension 45

## More images

