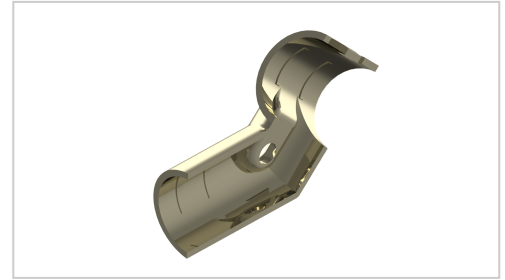


Angle Connector set 45° one sided A | ESD

Product number M-013-A-ESD

Weight 0.062kg



Product description

Clamp connector made of steel for the assembly of stable pipe push-in clamp connections.

Product properties

Compatible with Beewatec

Series S- LPS Lean Production

Part type Connector

Lean system type D28 steel kit system

More images

