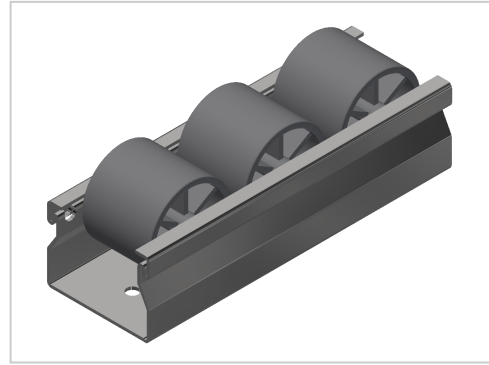


Roller Conveyor St D30, grey

Product number ZL-9017 SN4500

Weight 3.798kg

Length 4500mm



Product description

Delivery length 4500 mm

Perfect for your lean shelving: smooth-running roller conveyors with steel axles for an extra long service life.

Product properties

Compatible with	item , Bosch
Series	i- LPS Lean Production, B- LPS Lean Production
Part type	Roller tracks St
Profile length	4500 mm
Delivery unit	Rods
Colour	grey
Material	Galvanized steel
Lean system type	D30 Aluminium i kit system

More images

