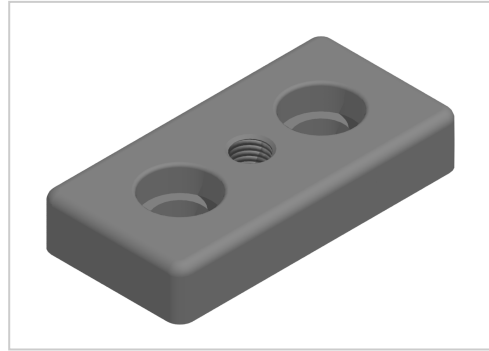


Base Plate 45x90 M12-10 | natural

Product number ZB-3320-N

Weight 0.255kg



Product description

For attaching adjusting feet, rollers, ring screws, etc., to the front side of the profiles. The base plate can also be screwed to the groove side with groove stones.

Product properties

Compatible with Bosch

Series Series 45-10

Size 45x90 mm

Thread M12

Modular dimension Modular dimension 45

More images

