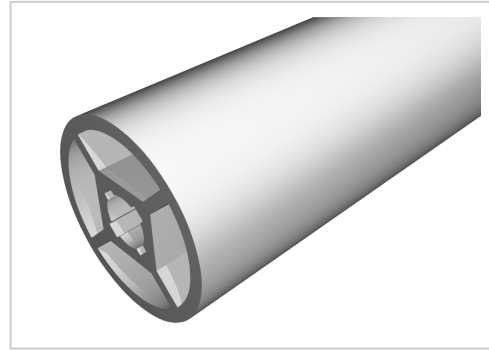


# Tube D 28, natural

**Product number** PL-1100 SN 6000  
**Weight** 4.35kg  
**Length** 6000mm



## Product description

Round tube with clamping grooves made of aluminum.

## Product properties

**Material** Al Mg Si 0.5 F25, artificially aged  
**Anodised** E6EV1 10-15 µm silver  
**Tolerances** EN 12020-2  
**Compatible with** Bosch  
**Series** B- LPS Lean Production  
**Delivery unit** Rods  
**Profile length** 6000 mm bar  
**Lean system type** D28 Aluminium B kit system

More images

