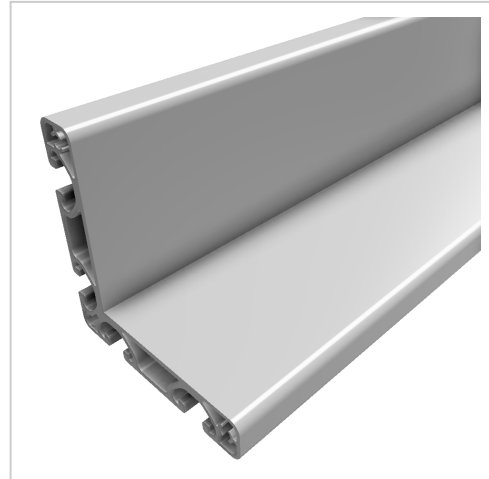


## Profile 8 W80x80 E, natural

**Product number** PI-1545 SZ

**Weight** 2.27kg



### Product description

Angle and flat profiles can be used in a variety of ways, e.g. for edging panel elements, as end or support strips, etc.

Cut to size max. 3000 mm

Compatible with item 7.0.001.12

### Product properties

<b>Material</b>	Al Mg Si 0.5 F25, artificially aged
<b>Anodised</b>	E6EV1 10-15 µm silver
<b>Tolerances</b>	EN 12020-2
<b>Compatible with</b>	item
<b>Nutauszugskraft</b>	F=1.750 N
<b>Breite Profil</b>	80 mm
<b>Höhe Profil</b>	80 mm
<b>Groove shape</b>	Open grooves
<b>Contour</b>	Angle
<b>Profile length</b>	Cut length
<b>Series</b>	Series 8
<b>Size</b>	80x80 mm
<b>Delivery unit</b>	Cuts
<b>Colour</b>	natural
<b>Execution</b>	economy

More images

