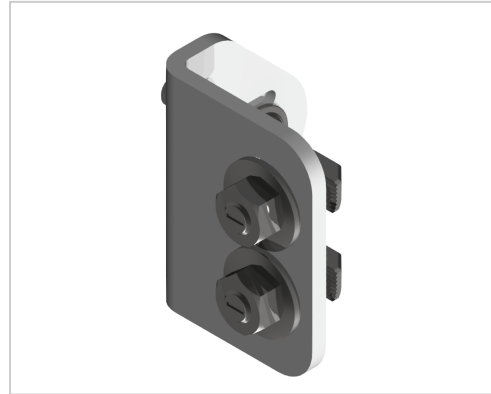


Set Mounting Brackets N10 Set D28

Product number ZL-1240

Weight 0.176kg



Product description

For the right-angled connection of a tube with outer diameter \varnothing 28 with an aluminium profile groove 10.
Adjustment by means of slotted holes

Product properties

Compatible with Bosch
Series B- LPS Lean Production
Connector type D-28 Connector
Material Galvanized steel
Lean system type D28 Aluminium B kit system

More images

