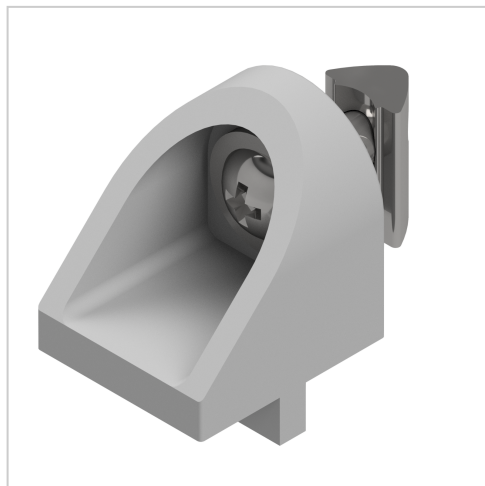


Angle Clamp Bracket 6

Product number ZI-3090

Weight 0.066kg



Product description

Clamping brackets allow two crossing profiles to be connected. They are suitable for table trays that are adjusted in position, height and inclination.

Product properties

Compatible with	item
Part type	Joints
Series	Series 6
Connector type	Angle clamp bracket
Material	GD-Zn
Colour	white aluminium

More images

