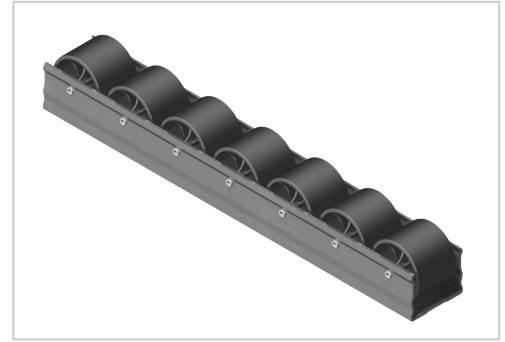


Roller Conveyor 35-33 ST ESD, black-D28 St

Product number PL-1020 SN4000

Length 4000mm



Product description

Each castor can bear a load of 10 KG.
The castors have a diameter of 33 mm.

Product properties

Compatible with	Bosch, Beewatec
Series	B- LPS Lean Production, S- LPS Lean Production
Part type	Roller tracks St
Colour	black
Delivery unit	Rods
Lean system type	D28 steel kit system, D28 Aluminium B kit system

