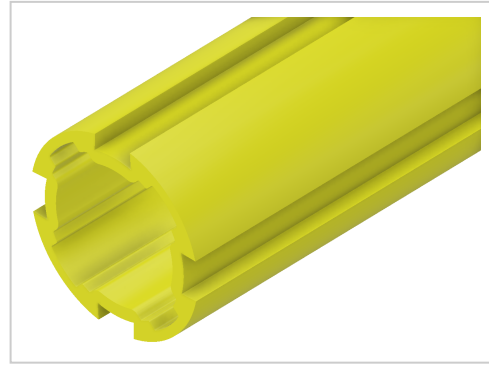


Profile Tube D30, natural

Product number PL-1122 SZ

Weight 3.126kg



Product description

Round tube with aluminium clamping grooves

Product properties

Compatible with item
Series i- LPS Lean Production
Colour yellow
Profile length Cut length
Delivery unit Cuts
Lean system type D30 Aluminium i kit system

More images

