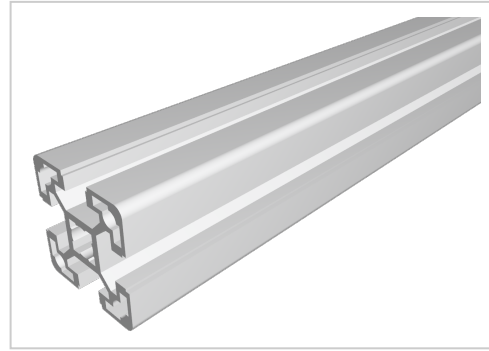


# Profile 40x40 light natural-10

**Product number** PB-1110 SZ

**Weight** 1.496kg



## Product description

The profiles in pitch 40 with groove 10 are suitable for assemblies of all kinds. Due to the different profile geometries, the material requirements can be adapted to the application. The grooves are designed for M8 screws.

Cut to size max. 6000 mm

Compatible with Bosch 3 842 993 120

## Product properties

<b>Compatible with</b>	Bosch
<b>Nutauszugskraft</b>	F=7.000 N
<b>Breite Profil</b>	40 mm
<b>Höhe Profil</b>	40 mm
<b>Groove shape</b>	Open grooves
<b>Profile length</b>	Cut length
<b>Contour</b>	Square
<b>Modular dimension</b>	Modular dimension 40
<b>Delivery unit</b>	Cuts
<b>Execution</b>	light
<b>Size</b>	40x40 mm
<b>Series</b>	Series 40-10
<b>Colour</b>	natural

More images

