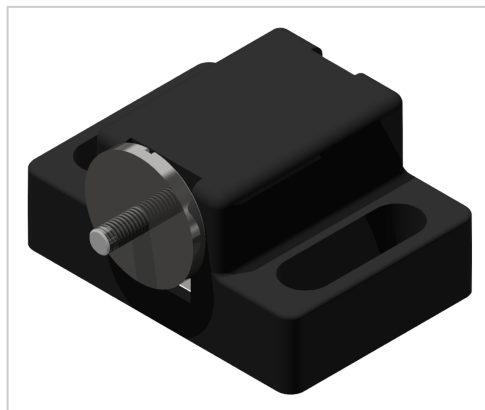


Ball Latch 8 PA

Product number ZI-1615

Weight 0.045kg



Product description

Ball catches are used for the guard locking of swing and sliding doors. Quick installation is possible due to slotted holes. M6 screws and sliding blocks are required for fastening.

Product properties

Compatible with	item
Part type	Door stops, Locks
Colour	black
Series	Series 8

More images

