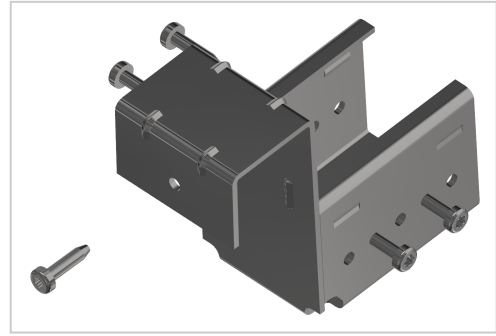


# Holding Bracket with Stop Set Alu-D28

**Product number** ZL-1167

**Weight** 0.208kg



## Product description

Suspension and stop. The roller rail support with stop stops goods and workpiece carriers at the end of the conveyor track.

## Product properties

<b>Compatible with</b>	Bosch
<b>Series</b>	B- LPS Lean Production
<b>Part type</b>	Roller conveyor holder
<b>Lean system type</b>	D28 steel kit system, D28 Aluminium B kit system
<b>Colour</b>	galvanized

## More images

