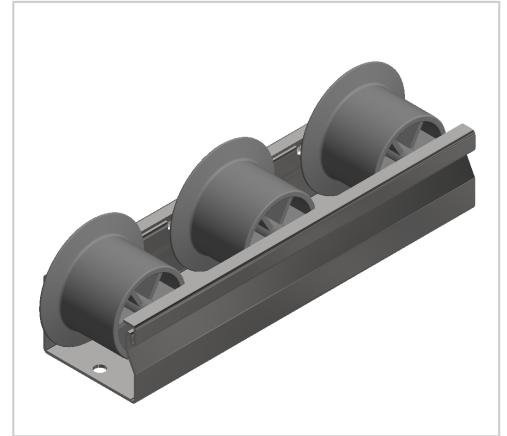


Roller Conveyor St D30 with Flanged Wheel, grey

Product number ZL-9018 SN4500
Weight 3.798kg
Length 4500mm



Product description

Delivery length 4500 mm
Perfect for your lean shelving: smooth-running roller conveyors with steel axles for an extra long service life.

Product properties

Compatible with item , Bosch
Series i- LPS Lean Production, B- LPS Lean Production
Profile length 4500 mm
Delivery unit Rods
Colour grey
Material Galvanized steel
Lean system type D30 Aluminium i kit system

More images

