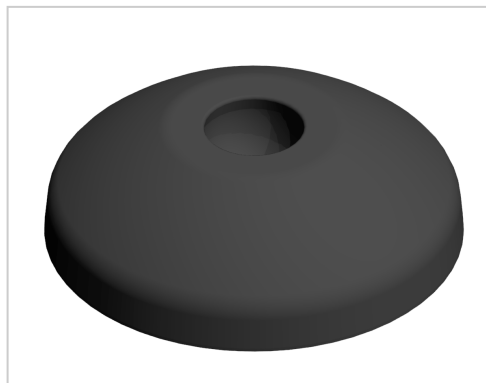


Base A D60 PA, black

Product number ZB-3197

Weight 0.013kg



Product description

The combination of a threaded rod and a swivel foot plate gives a complete adjustable foot. Leveling feet serve as any type stepless height and level adjustment of modules and racks. The tilt of the plate is variable. Optionally, a rubber insert can be installed.

Product properties

Compatible with	Bosch
Part type	levelling feet
Colour	black
Series	Series 60-10, Series 45-10, Series 50-10, Series 40-10, Series 30 8, Series 20-6
Type	A
Base for swivel feet Ø	60 mm
Execution	PA

More images

