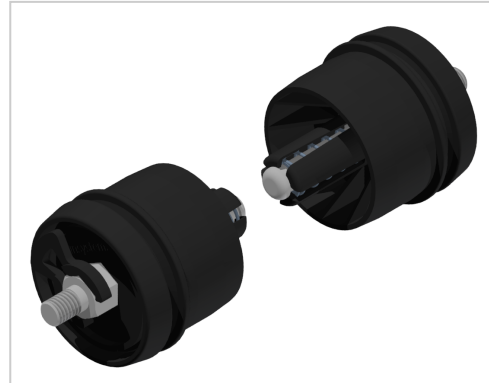


Conveyor Roller TR50, Bearing Set

Product number ZI-1975

Weight 0.25kg



Product description

Bearing set for the transport roller TR50 for the assembly of roller conveyors.

The bearing sets have a spring-loaded pivot and can be retrofitted into an existing assembly.

The axial position of the roller is fixed with two fixing pieces.

Max. load 1,000 N per roller.

The bearing sets are pressed together with the tube D 50 Al.

Product properties

Transport roller Ø TR 50

Compatible with item

Part type Transport rollers

Series Series 8

More images

