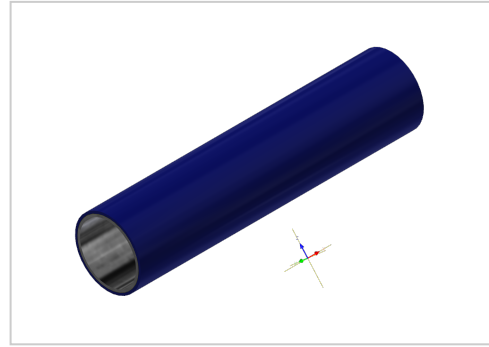


M-Tube 1 mm deep blue

Product number PL-2041 SN4000
Weight 2.787kg
Length 4000mm



Product description

The M-tube with a wall thickness of 1mm is used in conjunction with our connectors to build specific solutions such as workstations, transport trolleys, shelving systems.

Due to the 2 mm wall thickness, stability has a name.

With this stable wall you can solve even the most difficult problems in your production...

Our M-tubes are characterised by quality and stability.

The following features are due to the structure of the M-pipe.

Inner coating as corrosion protection.

Stable steel core.

Full-surface adhesive layer.

Full-surface synthetic resin layer.

This quality in the pipe structure leads to the positive properties such as

Heat resistance 100°C.

Cold resistance -20°C.

Highly resistant to oil and chemicals.

Translated with www.DeepL.com/Translator (free version)

Product properties

Compatible with Beewatec
Series S- LPS Lean Production
Profile length 4000 mm bar
Part type Tubes D28 steel
Delivery unit Rods
Lean system type D28 steel kit system
Colour sky blue

More images

