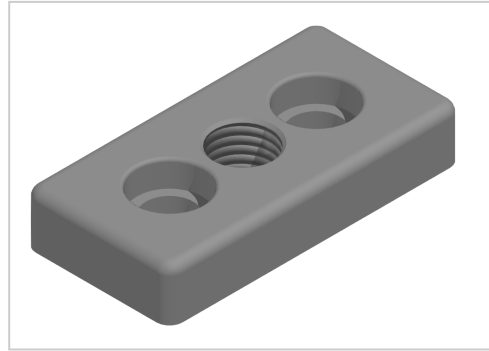


Base Plate 45x90 M20-10 | natural

Product number ZB-3335-N

Weight 0.243kg



Product description

For attaching adjusting feet, rollers, ring screws, etc., to the front side of the profiles. The base plate can also be screwed to the groove side with groove stones.

Product properties

Compatible with	Bosch
Part type	Base plates
Series	Series 45-10
Thread	M20
Size	45x90 mm
Modular dimension	Modular dimension 45

More images

