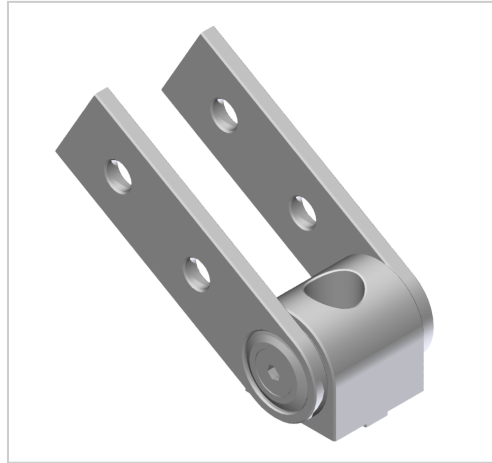


## Pivot Joint 20x20, white aluminium-6

**Product number** VB-1061

**Weight** 0.032kg



### Product description

Support arm joints are suitable for connecting profiles in a free angle. They can also be used as heavy hinges. The joints are freely movable. Tightening the clamping screws creates a rigid angle element. The fixings enable a twist-proof attachment to the profile groove.

### Product properties

<b>Part type</b>	Joints
<b>Series</b>	Series 6
<b>Connector type</b>	Hinges
<b>Colour</b>	white aluminium

## More images

