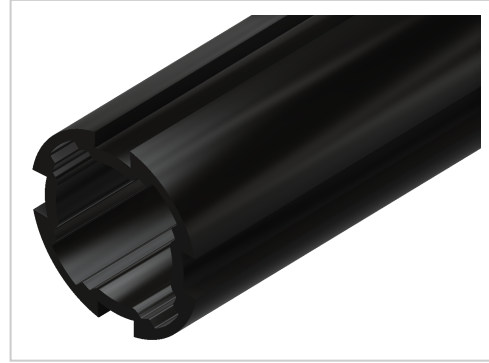


# Profile Tube D30, natural

**Product number** PL-1127 SZ

**Weight** 3.126kg



## Product description

Round tube with aluminium clamping grooves

## Product properties

**Compatible with** item  
**Series** i- LPS Lean Production  
**Colour** black  
**Profile length** Cut length  
**Delivery unit** Cuts  
**ESD discharging** Yes  
**Lean system type** D30 Aluminium i kit system

More images

