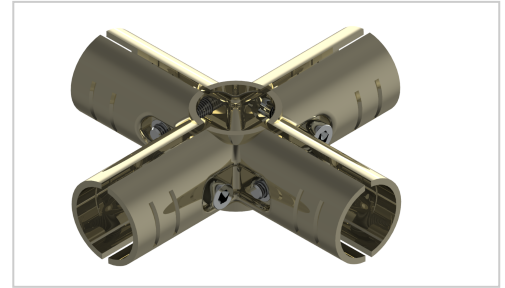


# Basic connector set as corner form 4 | ESD

**Product number** GA-5S-NI

**Weight** 0.424kg



## Product description

Clamp connector set made of steel for the assembly of stable pipe push-in clamp connections.

## Product properties

<b>Compatible with</b>	Beewatec
<b>Series</b>	S- LPS Lean Production
<b>Part type</b>	Connector
<b>Lean system type</b>	D28 steel kit system
<b>Connector type</b>	Basic connector

### More images

