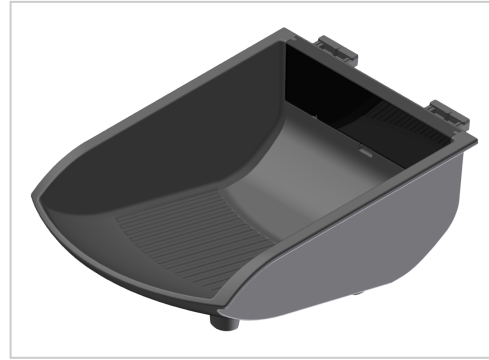


# Grab Tray 105x130, black-8

**Product number** ZI-1399-S

**Weight** 0.071kg



## Product description

Gripping trays enable the provision of stocked small parts. Assembly is done by simply swinging them into the profile groove. The trays can also be additionally secured using M5 screws. Compatible with item 0.0.699.40

## Product properties

**Series** Workstation systems, Series 8

**Compatible with** item

**Part type** Gripper shells

**Colour** black

More images

