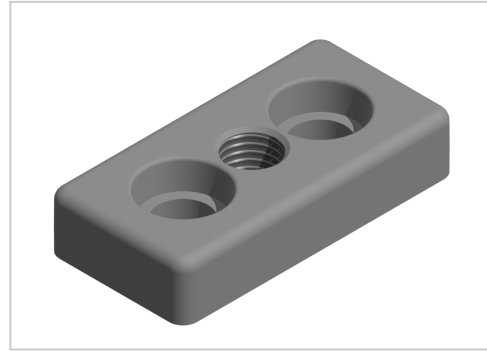


## Base plate 40x80 M16, natural-10

**Product number** ZB-3276

**Weight** 0.178kg



### Product description

For attaching adjusting feet, rollers, ring screws, etc., to the front side of the profiles. The base plate can also be screwed to the groove side with groove stones.

### Product properties

<b>Compatible with</b>	Bosch
<b>Part type</b>	Base plates
<b>Modular dimension</b>	Modular dimension 40
<b>Series</b>	Series 40-10
<b>Colour</b>	natural
<b>Size</b>	80x40 mm
<b>Thread</b>	M16

More images

