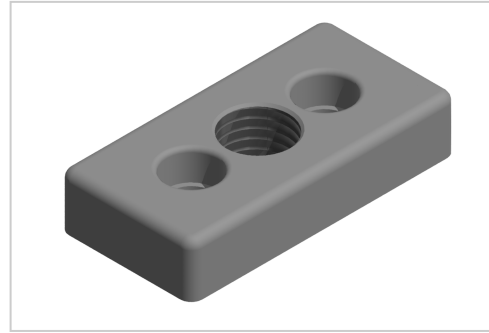


## Base Plate 30x60 M16, plain-8

**Product number** ZB-3272

**Weight** 0.092kg



### Product description

For attaching adjusting feet, rollers, ring screws, etc., to the front side of the profiles. The base plate can also be screwed to the groove side with groove stones.

### Product properties

<b>Compatible with</b>	Bosch
<b>Part type</b>	Base plates
<b>Series</b>	Series 8, Series 30 8
<b>Modular dimension</b>	Modular dimension 40
<b>Size</b>	60x30 mm
<b>Colour</b>	natural
<b>Thread</b>	M16

More images

