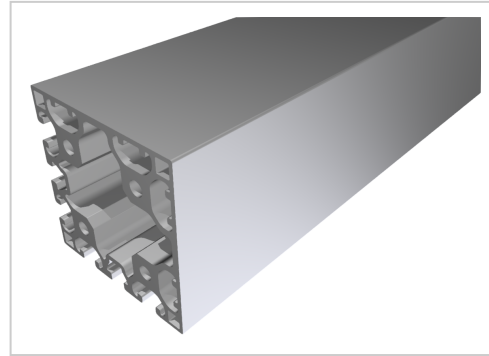


Profile 8 80x80, natural

Product number PI-6140 SZ

Weight 5.541kg



Product description

Profiles 8 are suitable for assemblies of all kinds. Due to the different profile geometries, the material requirements can be adapted to the application. The grooves and the core holes of the profiles 8 are designed for M8 screws.

Cut to size max. 6000 mm

Product properties

Material	Al Mg Si 0.5 F25, artificially aged
Anodised	E6EV1 10-15 µm silver
Tolerances	EN 12020-2
Nutauszugskraft	F=2.500 N
Breite Profil	80 mm
Höhe Profil	80 mm
Funktionsintegration	Türdichtungsnut
Execution	XMS, light
Profile length	Cut length
Series	Series 8
Size	80x80 mm
Contour	Square
Delivery unit	Cuts
Colour	natural
Groove shape	2 sides closed 90°

More images

