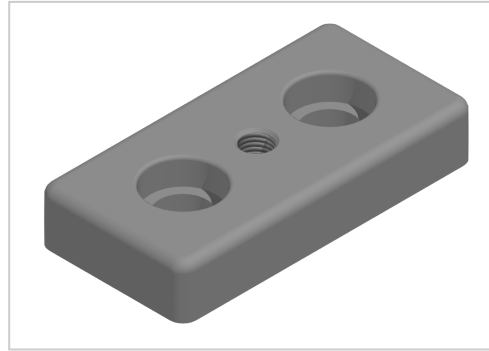


Base Plate 45x90 M10-10 | natural

Product number ZB-3315-N

Weight 0.257kg



Product description

For attaching adjusting feet, rollers, ring screws, etc., to the front side of the profiles. The base plate can also be screwed to the groove side with groove stones.

Product properties

Compatible with	Bosch
Series	Series 45-10
Size	45x90 mm
Thread	M10
Modular dimension	Modular dimension 45

More images

