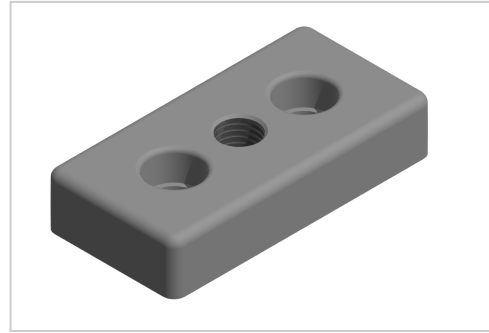


Base Plate 30x60 M10, plain-8

Product number ZB-3270

Weight 0.098kg



Product description

For attaching adjusting feet, rollers, ring screws, etc., to the front side of the profiles. The base plate can also be screwed to the groove side with groove stones.

Product properties

Compatible with	Bosch
Part type	Base plates
Size	60x30 mm
Colour	natural
Series	Series 30 8
Thread	M10

More images

