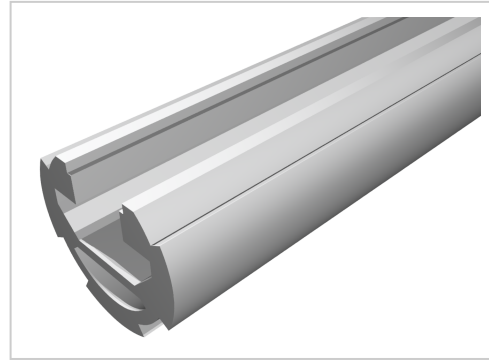


Profile Tube 10 D 28, natural

Product number PL-1105 SZ

Weight 4.35kg



Product description

Round tube with clamping grooves and additional groove 10 made of aluminum.

Product properties

Compatible with Bosch
Series B- LPS Lean Production
Profile length Cut length
Delivery unit Cuts
Lean system type D28 Aluminium B kit system

More images

