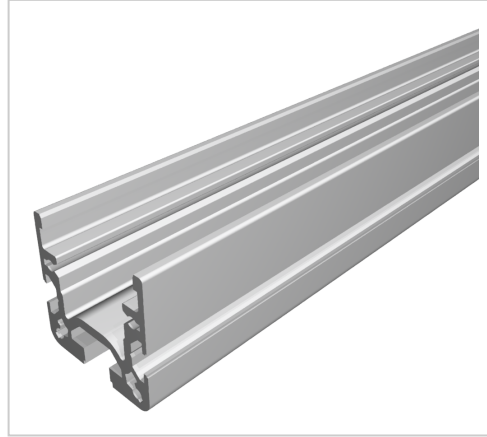


Castor Rail 40x40 B, natural - Alu

Product number PL-1095 SN6000

Length 6000mm



Product description

The roller track 40x40 D28 is our specialist for complex transport solutions.

The 40x40 roller track forms the basis.

It is equipped with roller, ball transfer roller, brush or glide inserts.

The various inserts can also be retrofitted as required by simply by simply snapping them into place.

Product properties

Compatible with	item
Series	B- LPS Lean Production
Part type	Roller conveyor profile
Delivery unit	Rods
Colour	natural
Lean system type	D28 Aluminium B kit system

More images

