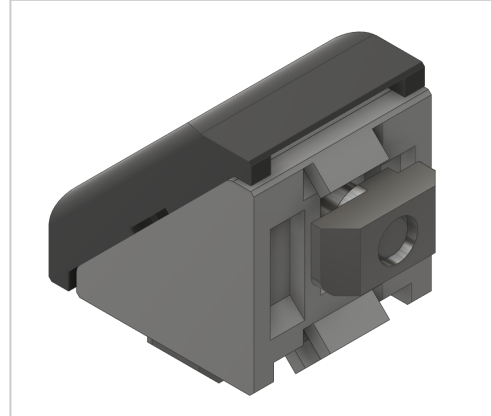


Angle Bracket Set 20x20, natural-6

Product number ZB-1005

Weight 0.007kg



Product description

Angles are a force-fit and processing wireless connection. These are also used as additional reinforcement of connections and as a fastener for attachments. Integral safety devices for fixing the profile are available. These are removed if necessary.

Product properties

Profile processing without profile machining

Compatible with Bosch

Part type Bracket

Angle bracket type Winkelsätze Al, Angle bracket Al

Size 20x20 mm

Colour natural

Series Series 20-6

More images

