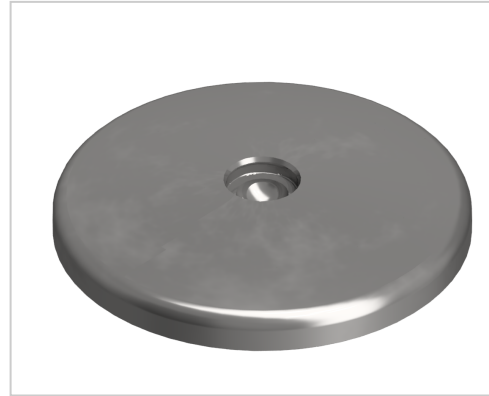


Base A D120, stainless

Product number ZB-3224

Weight 0.844kg



Product description

The combination of a threaded rod and a base plate results in a complete base. Adjusting feet serve as a stepless height and level equalization of assemblies and reeds of any kind. The inclination of the plate is variable. Optionally, a rubber insert can be installed.

Product properties

Compatible with	Bosch
Part type	levelling feet
Series	Series 60-10, Series 45-10, Series 50-10, Series 40-10, Series 30 8, Series 20-6
Base for swivel feet Ø	120 mm
Type	A
Execution	stainless steel

More images

