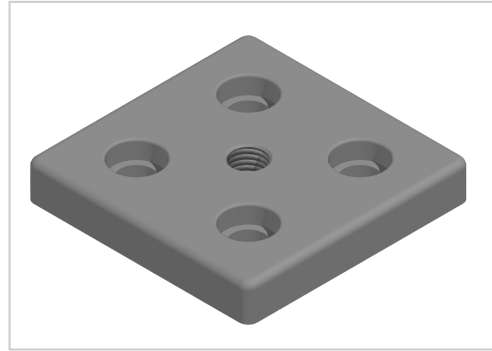


## Base Plate 100x100 M16-10 | natural

**Product number** ZB-3435-N

**Weight** 0.527kg



### Product description

For attaching adjusting feet, rollers, ring screws, etc., to the front side of the profiles. The base plate can also be screwed to the groove side with groove stones.

### Product properties

<b>Compatible with</b>	Bosch
<b>Part type</b>	Base plates
<b>Size</b>	100x100 mm
<b>Series</b>	Series 50-10
<b>Modular dimension</b>	Modular dimension 50
<b>Thread</b>	M16

More images

