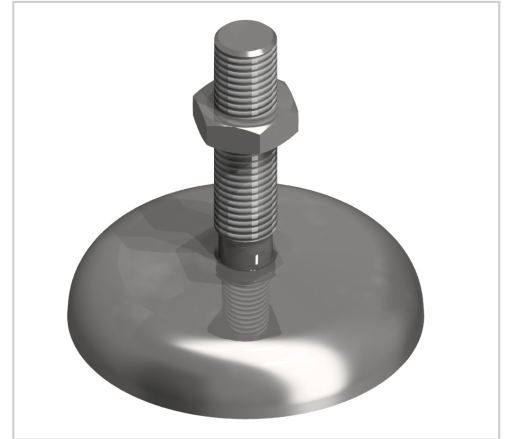


Knuckle Foot ST D90 M16x85, bright zinc-plated

Product number ZB-3172

Weight 0.423kg



Product description

Leveling feet serve as any type stepless height and level adjustment of modules and racks. The tilt of the plate is variable. Optionally, a rubber insert can be installed.

Product properties

Compatible with	Bosch
Series	Series 60-10, Series 45-10, Series 50-10, Series 40-10, Series 30 8, Series 20-6
Total height	85 mm
Base for swivel feet Ø	90 mm
Material	Galvanized steel
Thread	M16

More images

