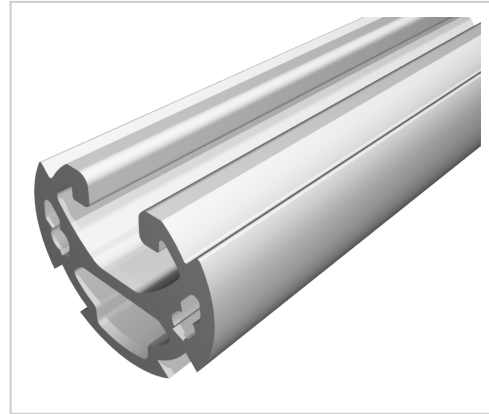


# Profile Tube 8 D30, natural

**Product number** PL-1120 SZ

**Weight** 7.326kg



## Product description

Round tube with clamping grooves and additional groove 8 made of aluminium .

## Product properties

<b>Material</b>	Al Mg Si 0.5 F25, artificially aged
<b>Anodised</b>	E6EV1 10-15 µm silver
<b>Tolerances</b>	EN 12020-2
<b>Compatible with</b>	item
<b>Series</b>	i- LPS Lean Production
<b>Profile length</b>	Cut length
<b>Delivery unit</b>	Cuts
<b>Lean system type</b>	D30 Aluminium i kit system

More images

