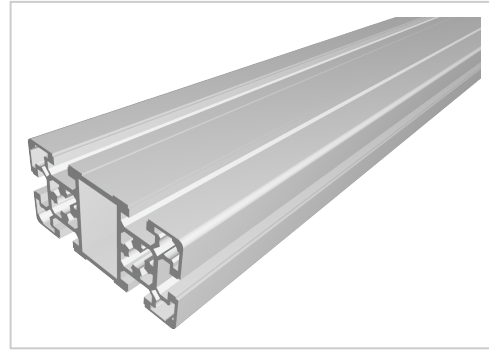


# Profile 50x100 light natural-10

**Product number** PB-1320 SN6000  
**Weight** 28.38kg  
**Length** 6000mm



## Product description

The profiles Raster 50 with groove 10 are suitable for assemblies of all kinds. Due to the different profile geometries, the material requirements can be adapted to the application. The grooves are designed for M8 screws.

Compatible with Bosch 3 842 993 16

## Product properties

<b>Compatible with</b>	Bosch
<b>Nutauszugskraft</b>	F=7.000 N
<b>Breite Profil</b>	50 mm
<b>Höhe Profil</b>	50 mm
<b>Groove shape</b>	Open grooves
<b>Delivery unit</b>	Rods
<b>Size</b>	50x100 mm
<b>Profile length</b>	6000 mm bar
<b>Execution</b>	light
<b>Contour</b>	Rectangular
<b>Series</b>	Series 50-10
<b>Colour</b>	natural
<b>Modular dimension</b>	Modular dimension 50

More images

