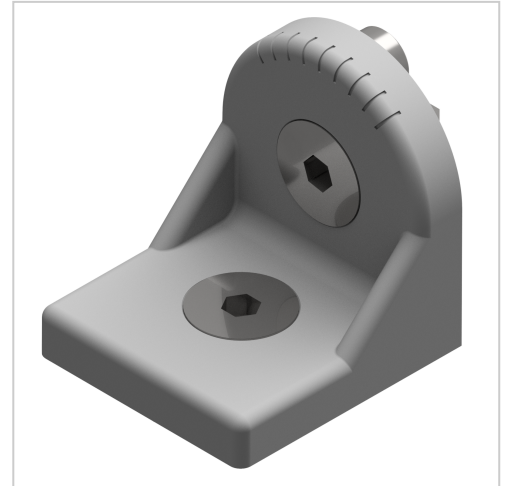


Turning Angle Set B 45, white aluminium-10

Product number VB-3305

Weight 0.077kg



Product description

Turning angles enable a connection of two crossing profiles. They are suitable for table trays that are adjusted in position, height and inclination.

Product properties

Compatible with	Bosch
Part type	Joints
Series	Series 45-10
Connector type	Rotation angles
Colour	white aluminium
Modular dimension	Modular dimension 45

More images

