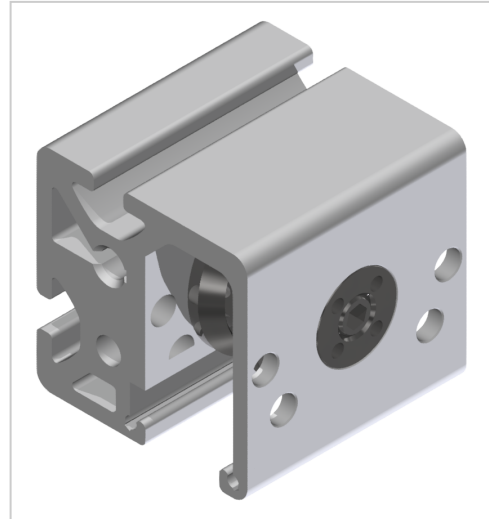


# Bearing Unit 8 D14 e

**Product number** ZI-1640

**Weight** 0.164kg



## Product description

Linear slides are built up with bearing units. They are used in pairs, 1 piece eccentrically (this is set backlash-free) and opposite 1 piece centrally. To minimise wear, a wiper lubrication system must always be installed on each bearing unit.

## Product properties

**Compatible with** item  
**Part type** Roller guides  
**Series** Series 8  
**Diameter mm** Ø 14

More images

