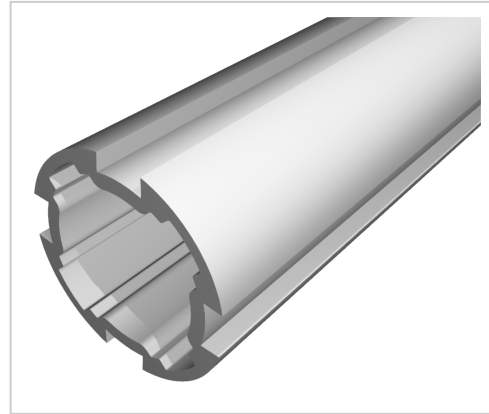


Profile Tube D30, natural

Product number PL-1115 SZ

Weight 0.523kg



Product description

Round tube with aluminium clamping grooves

Product properties

Material Al Mg Si 0.5 F25, artificially aged
Anodised E6EV1 10-15 µm silver
Tolerances EN 12020-2
Compatible with item
Series i- LPS Lean Production
Profile length Cut length
Delivery unit Cuts
Lean system type D30 Aluminium i kit system

More images

