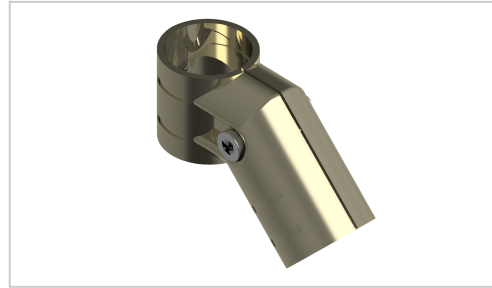


Angle connector set 45° fixed | ESD

Product number GA-13S Ni

Weight 0.135kg



Product description

Clamp connector set made of steel for the assembly of stable pipe push-in clamp connections.

Product properties

Compatible with Beewatec

Series S- LPS Lean Production

Part type Connector

Lean system type D28 steel kit system

More images

