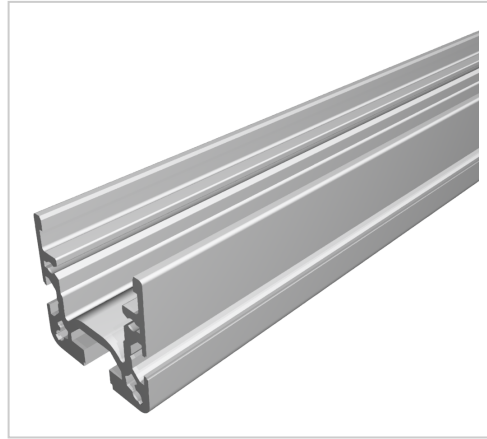


Castor Rail 40x40 B, natural - Alu

Product number PL-1095 SZ

Weight 1.28kg



Product description

The roller track 40x40 D28 is our specialist for complex transport solutions.

The 40x40 roller track forms the basis.

It is equipped with roller, ball transfer roller, brush or glide inserts.

The various inserts can also be retrofitted as required by simply
by simply snapping them into place

Product properties

Material	Al Mg Si 0.5 F25, artificially aged
Anodised	E6EV1 10-15 µm silver
Tolerances	EN 12020-2
Compatible with	Bosch
Series	B- LPS Lean Production
Part type	Roller conveyor profile
Delivery unit	Cuts
Colour	natural
Lean system type	D28 Aluminium B kit system

More images

